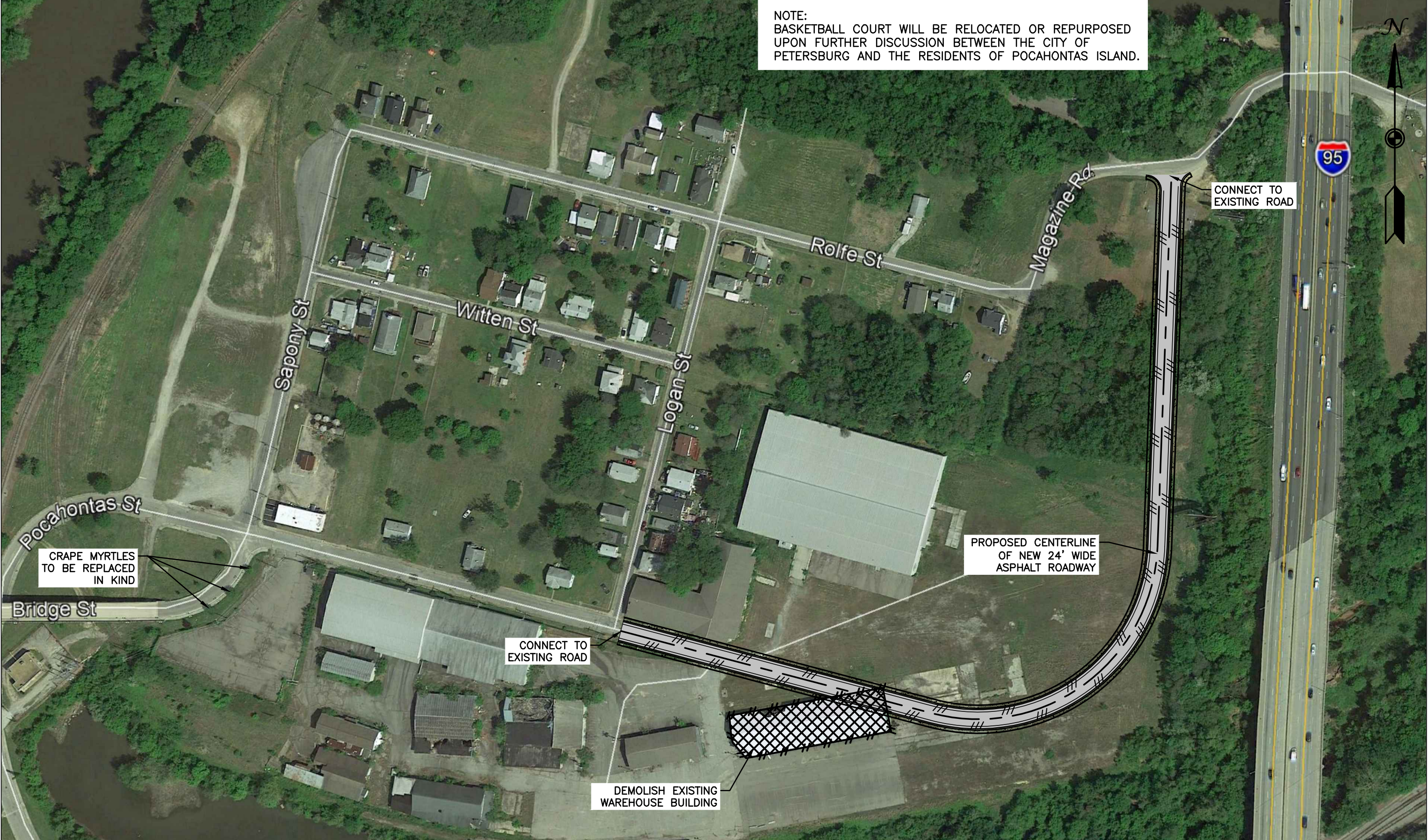


NOTE:  
 BASKETBALL COURT WILL BE RELOCATED OR REPURPOSED  
 UPON FURTHER DISCUSSION BETWEEN THE CITY OF  
 PETERSBURG AND THE RESIDENTS OF POCAHONTAS ISLAND.



NO.	REVISION	BY	DATE	NO.	REVISION	BY	DATE

CONNECT TO EXISTING ROAD

DEMOLISH EXISTING WAREHOUSE BUILDING

**W ASSOCIATES**  
 ENGINEERS SURVEYORS PLANNERS  
 968 Olympia Drive, Suite 1 P.O. Box 4119  
 Charlottesville, VA 22911 Lynchburg, VA 24502  
 Phone: 434-964-2700 Fax: 434-316-6080  
 www.wassociates.net

DESIGNED BY: <b>JDB</b>	PROJECT: <b>SOUTH CENTRAL WASTEWATER AUTHORITY PETERSBURG, VIRGINIA</b>	REVISION NUMBER: -
DRAWN BY: <b>JDB</b>		DRAWING NUMBER: C-1
REVIEWED BY: <b>HFW</b>		SHEET NUMBER: 1 of 2
WMA NUMBER: <b>220045.00</b>	TITLE: <b>ROAD ALIGNMENT EXHIBIT EDA RECOMMENDATIONS</b>	DATE: <b>02/26/21</b>
FILE NAME:	DISCIPLINE: <b>CIVL</b>	SCALE: H: 1"=150' V: N/A