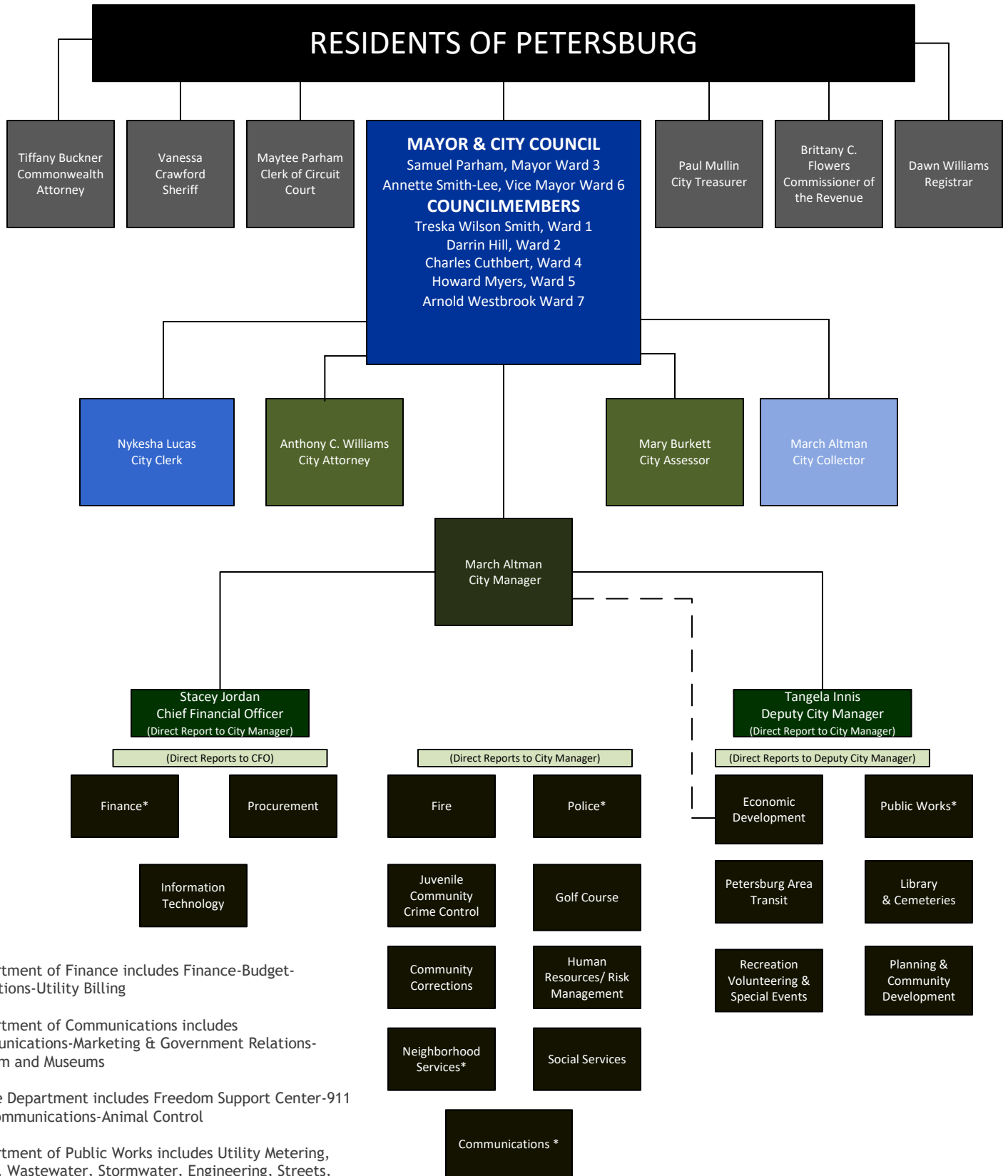


CITY OF PETERSBURG ORGANIZATIONAL CHART



*Department of Finance includes Finance-Budget-Collections-Utility Billing

*Department of Communications includes Communications-Marketing & Government Relations-Tourism and Museums

*Police Department includes Freedom Support Center-911 Telecommunications-Animal Control

*Department of Public Works includes Utility Metering, Water, Wastewater, Stormwater, Engineering, Streets, Facilities and Grounds

*Department of Neighborhood Services included the Fire Marshalls Office.